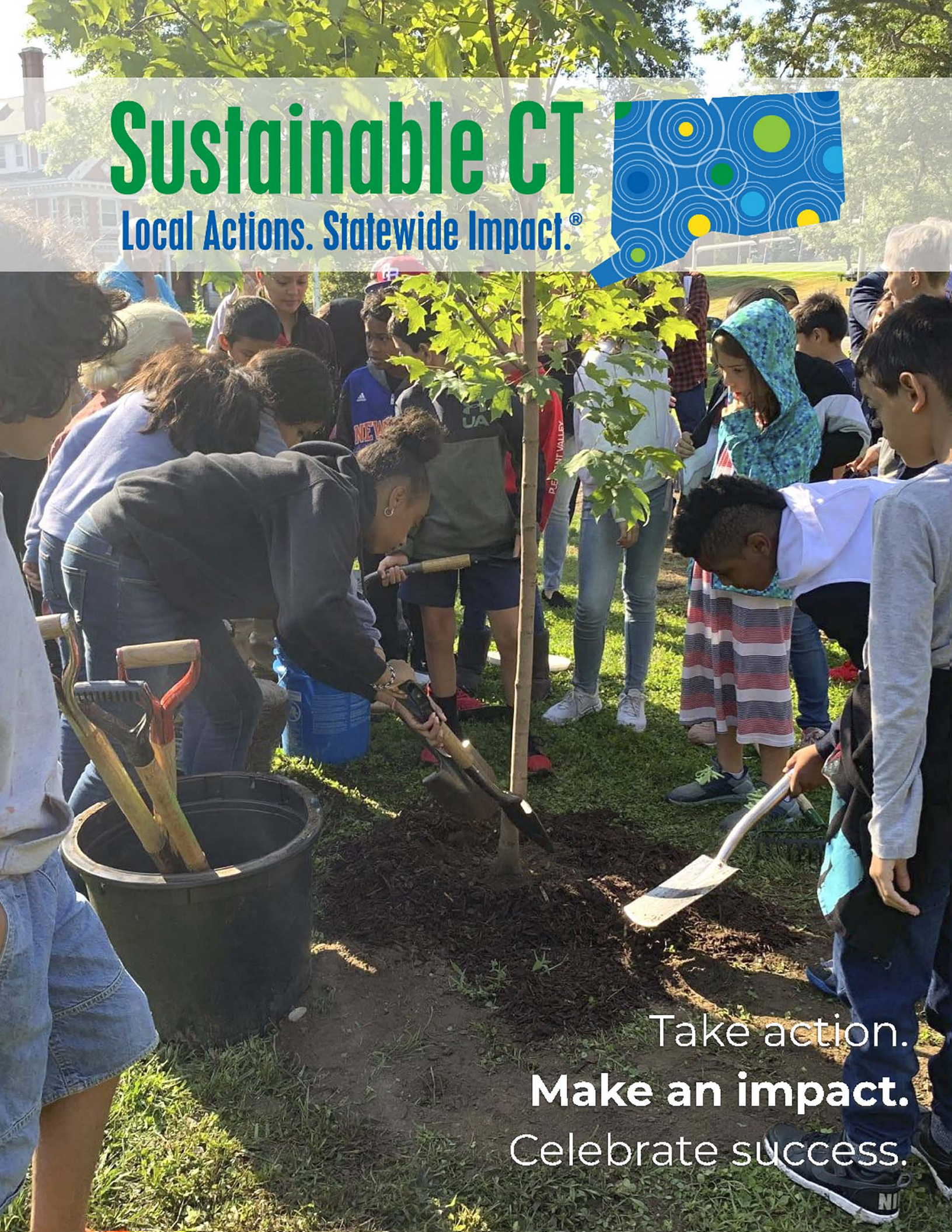
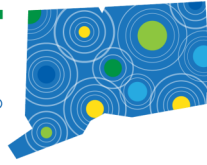


Sustainable CT

Local Actions. Statewide Impact.®



Take action.
Make an impact.
Celebrate success.



Sustainable CT is a free, voluntary certification program that inspires, supports, and celebrates thriving and resilient Connecticut municipalities.

Why Participate?

» Build a more inclusive, efficient, and vibrant community through our menu of sustainability actions

» Access free technical assistance and support

» Access flexible funding through our Community Match Fund

» Be recognized for your sustainability accomplishments

Find Out More:

sustainablect.org



info@sustainablect.org

Action

1. INCLUSIVE AND EQUITABLE COMMUNITIES

- 1.1 Optimize for Equity (Required for All)
- 1.2 Participate in Equity Training
- 1.3 Develop and Adopt a Statement on Equity

2. THRIVING LOCAL ECONOMIES

- 2.1 Support Redevelopment of Brownfield Sites
- 2.2 Implement Sustainable Purchasing
- 2.3 Inventory and Promote Local Products and Services
- 2.4 Provide Resources and Supports to Local Businesses
- 2.5 Promote Sustainable Workforce Development

3. WELL STEWARDED LAND AND NATURAL RESOURCES

- 3.1 Provide Watershed Education
- 3.2 Create a Watershed Management Plan
- 3.3 Engage in Watershed Protection and Restoration
- 3.4 Develop an Open Space Plan
- 3.5 Create a Natural Resource and Wildlife Inventory
- 3.6 Manage for Drought and Municipal Water Use
- 3.7 Provide Education on Responsible Water Usage
- 3.8 Implement Low Impact Development
- 3.9 Manage Woodlands and Urban Forests
- 3.10 Facilitate Invasive Species Education and Management
- 3.11 Implement Green Grounds and Maintenance Programs
- 3.12 Enhance Pollinator Pathways
- 3.13 Promote Dark Skies
- 3.14 Implement Sustainable Snow Management

4. VIBRANT AND CREATIVE CULTURAL ECOSYSTEMS

- 4.1 Map Tourism and Cultural Assets
- 4.2 Support Arts and Creative Culture
- 4.3 Develop a Creative Placemaking Plan
- 4.4 Provide an Arts and Culture Program for Youth

5. DYNAMIC AND RESILIENT PLANNING

- 5.1 Integrate Sustainability Into Plan of Conservation and Development
- 5.2 Adapt Permitting Process to Promote Sustainable Development
- 5.3 Develop Agriculture-Friendly Practices
- 5.4 Assess Climate Vulnerability
- 5.5 Inventory and Assess Historic Resources
- 5.6 Streamline Solar Permitting for Small Solar Installations
- 5.7 Plan for Long-Term Recovery
- 5.8 Promote Cool Roofs
- 5.9 Participate in Nat'l Flood Insurance Program's Community Rating System

6. CLEAN AND DIVERSE TRANSPORTATION SYSTEMS AND CHOICES

- 6.1 Implement Complete Streets
- 6.2 Promote Effective Parking Management
- 6.3 Encourage Smart Commuting
- 6.4 Support Zero Emission Vehicle Deployment
- 6.5 Promote Public Transit and Other Mobility Strategies
- 6.6 Manage Municipal Fleets

Action

7. RENEWABLE AND EFFICIENT ENERGY

- 7.1 Benchmark and Track Energy Use
- 7.2 Reduce Energy Use Across All Municipal Buildings
- 7.3 Achieve High Energy Performance for Individual Buildings
- 7.4 Increase Use of Renewable Energy in Municipal Buildings
- 7.5 Develop a Municipal Energy Plan
- 7.6 Install Efficient Exterior Lighting
- 7.7 Implement a Community Energy Campaign
- 7.8 Complete Energy Audits of Municipal Buildings
- 7.9 Participate in and Promote the C-PACE Program
- 7.10 Support Battery Storage Solutions

8. INCLUSIVE ENGAGEMENT, COMMUNICATION AND EDUCATION

- 8.1 Hold a Sustainability Event
- 8.2 Provide Effective Community Communications
- 8.3 Train Municipal Representatives
- 8.4 Support Community Match Fund Project and Civic Engagement
- 8.5 Engage in Sustainable CT Mentorship with Other Municipalities
- 8.6 Collaborate With Other Municipalities on Sustainability Actions
- 8.7 Engage with Youth on Community Sustainability

9. STRATEGIC MATERIALS MANAGEMENT

- 9.1 Report Materials Management Data and Reduce Waste
- 9.2 Implement Unit-Based Pricing
- 9.3 Recycle Additional Materials
- 9.4 Reduce and Compost Organic Waste

10. OPTIMAL HEALTH AND WELLNESS OPPORTUNITIES

- 10.1 Encourage an Equitable and Just Food System
- 10.2 Conduct Health Impact Assessments
- 10.3 Improve Air Quality in Public Spaces
- 10.4 Develop and Promote Community Growing Spaces
- 10.5 Support Equitable Food Access and Local Farmers
- 10.6 Plan and Prepare for Extreme Heat
- 10.7 Improve Outdoor Access for All

11. HEALTHY, EFFICIENT, AND DIVERSE HOUSING

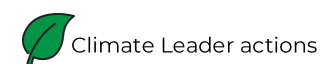
- 11.1 Implement an Affordable Housing Plan
- 11.2 Grow Sustainable and Affordable Housing Options
- 11.3 Implement Policy for Sustainable, Diverse Housing Options

12. EFFECTIVE, COMPASSIONATE HOMELESSNESS PREVENTION

- 12.1 Strengthen Municipal Capacity to Address Homelessness
- 12.2 Increase Public Awareness and Support Efforts to End Homelessness
- 12.3 Collect and Share Homelessness Data
- 12.4 Provide or Mobilize Resources to Address Homelessness

13. INNOVATIVE STRATEGIES AND PRACTICES

- 13.1 Implement Your Own Sustainability Action



Bronze Certification

- Complete **1 Equity Toolkit** in Action 1.1, Optimize for Equity.
- Implement at least **1 action** of your choice in Categories 1-12.
- Successfully complete actions totaling **200 or more points**.



Silver Certification

- Complete **3 Equity Toolkits** in Action 1.1, Optimize for Equity.
- Implement at least **1 action** of your choice in Categories 1-12.
- Successfully complete actions totaling **500 or more points**.



Gold Certification

- Complete **all actions** in Category 1, Inclusive and Equitable Communities, including **4 Equity Toolkits** in Action 1.1, Optimize for Equity.
- Implement at least **1 action** of your choice in Categories 2-12.
- Achieve **Climate Leader Designation**.
- Complete **Action 8.6**, Collaborate with Other Municipalities on Sustainability Actions.
- Successfully complete actions totaling **750 or more points**.



Climate Leader Designation

Achieve a total of **at least 150 points** in actions marked with the Climate Leader leaf.

THE COMMUNITY MATCH FUND

Sustainable CT's innovative **Community Match Fund** provides fast, flexible funding and support to implement projects that align with our menu of sustainability actions. Unlike traditional funding programs, the Community Match Fund has no tedious grant application, no deadlines, no lengthy review period, and minimal reporting requirements. We invite great ideas that provide public benefits to your community. And we support projects led by individual residents, nonprofits, community groups, municipalities, schools, libraries—anyone in a Sustainable CT registered town.

Have an idea to make your community more sustainable, equitable, and vibrant? Contact us at funding@sustainablect.org.

Whether you're dreaming of more green spaces, solar for public spaces, greenways for biking and walking, murals and other public art, green jobs programs, community composting programs, or community gardens, the Sustainable CT Community Match Fund can help make your idea a reality. We'll work with you to develop and run a crowdfunding campaign and **we'll match every donation** you receive dollar-for-dollar.



Sustainable CT's Community Match Fund is generously supported by

