

THE
SUSTAINABLE CT 2026
SPRING INTO SUMMER
CELEBRATION

Sponsored by  Earth
Forward
Group

HILL-STEAD MUSEUM

JUNE 11, 2026

Sustainable CT 
Local Actions. Statewide Impact.®



YOUR PARTNER IN BUILDING A GREENER, MORE RESILIENT CT.

From sustainability planning and community outreach to workforce training and new construction guidance; Earth Forward Group helps municipalities turn sustainability commitments into real, measurable action.

- MUNICIPAL LEADERS
- PLANNING DEPARTMENTS
- GREEN TEAMS
- SUSTAINABILITY COMMITTEES
- LOCAL CONTRACTORS

HOW WE CAN HELP YOUR MUNICIPALITY

- 
Sustainability Planning & Goal Setting
 Develop actionable plans covering energy conservation, waste reduction, resource management, and climate resilience, aligned with Sustainable CT goals.
- 
Community Outreach & Resident Engagement
 Educate residents on energy-saving programs, energy efficient upgrades, and sustainable housing, strengthening your Sustainable CT partnership.
- 
Workforce Training for Local Contractors
 Deliver building science and green construction training directly to your local contractor workforce.
- 
Earth Forward House™: On-Site Training Lab
 Our mobile, BPI-approved field lab brings hands-on building science training directly to your location. No travel required. Train and certify your municipal staff and local contractors on your schedule.


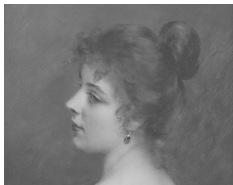


Schedule a Free Intro Meeting
 Schedule a no-cost discovery call to explore partnership opportunities by emailing our team at info@earthforwardgroup.com



SCAN TO JOIN OUR EMAIL LIST
info@earthforwardgroup.com
 (203) 687-8278 | earthforwardgroup.com

THE SUSTAINABLE CT 2026 SPRING INTO SUMMER CELEBRATION

- | | | | |
|--|---|---|---|
| JESSICA LECLAIR
Executive Director |  | KATE RICHARD
Director for Sustainability Best Practices |  |
| JIM HUNT
Director for Communications & Development |  | DEB MATHIASEN
Administrative Coordinator |  |
| TORIN RADICIONI
Program Assistant |  | LILLY ADAMO
Program Assistant |  |
| SUMMER MITCHELL
Program Assistant |  | KATIE MEDER
Sustainable Communities Fellow |  |

ABOUT SUSTAINABLE CT

SUSTAINABLE CT is a free, voluntary certification program that supports and recognizes thriving and resilient Connecticut municipalities. We provide a wide-ranging menu of best practices; municipalities choose Sustainable CT actions, implement them, and earn points toward certification.



Sustainable CT also provides opportunities for grant funding through its **Community Match Fund program**—a program that recently surpassed *\$5 million* in funds directly invested in community-led projects across the state. Our Community Match Fund helps communities promote economic well-being and enhance equity, all while respecting the finite capacity of the natural environment. The program is designed to support all Connecticut municipalities, regardless of size, geography, or resources.

Visit sustainablect.org/support-us to discover the many different ways you can support our work and mission.

Sustainable CT has strong, multi-year support from:



Tremaine Foundation



COMMONSENSEFUND

Funding is also provided by the State of Connecticut and administered by the [Connecticut Department of Energy and Environmental Protection \(DEEP\)](https://deep.ct.gov/)

HILL-STEAD MUSEUM



HILL-STEAD Museum is a singular place, seamlessly blending the charm of a historic house with the allure of an art museum. Set within 152 acres of breathtaking natural beauty, the museum boasts an extraordinary **collection** of Impressionist and decorative art, meticulously displayed within its original, in-situ domestic interiors. The fusion of historical architecture and world-class artwork creates an immersive experience that distinguishes Hill-Stead from other institutions. Its founder, Theodate Pope Riddle (b.1867)—one of the first licensed female architects in the United States—designed Hill-Stead as her family home in 1901 and transformed it into a museum upon her death in 1946. Her creation and legacy represent a harmonious convergence of heritage, art, and nature.

OUR EVENT

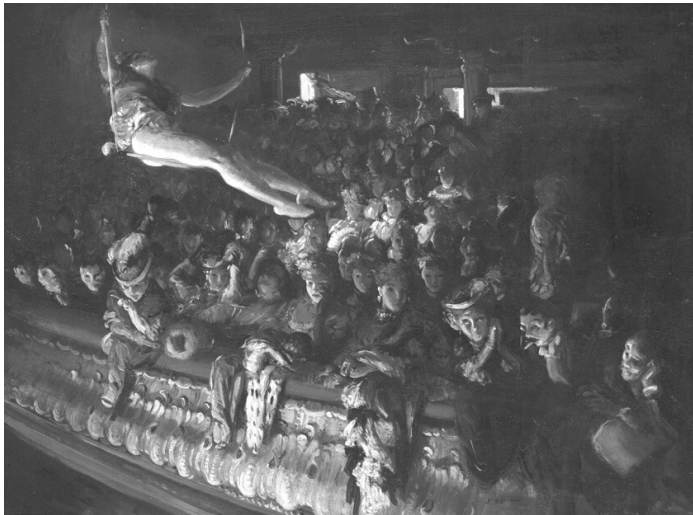
Networking & Refreshments

Welcome & Remarks—5pm

Certification Awards

Keynote: Jason Mancini

Vice Chair of America 250, CT Commission



**Clean
Transportation
Communities**
of Southern Connecticut

Funded by the U.S. Department of Energy
to assist municipalities with:

- EV readiness
- Outreach and technical assistance
- EV charging infrastructure
- Electric school buses
- CT incentive programs

cleantransportationct.org
schulick@cleantransportationct.org



Turn Energy Waste Into Community Investment

Every dollar saved on energy is a dollar reinvested
into your community

**Energia celebrates the Spring
certified communities for their
leadership in sustainability!**

FOR A FREE ENERGY PERFORMANCE
CONTRACT OPPORTUNITY ASSESSMENT
PLEASE CONTACT:

Kendra McQuilton, CEO
kmcquilton@energiasaves.com





CERTIFICATION AWARDS



BLOOMFIELD—Bronze Certified
Certification Points Earned: 315
Sustainability Actions Completed: 17



BRANFORD—Bronze Certified
Certification Points Earned: 310
Sustainability Actions Completed: 18



BRIDGEPORT—Silver Certified
Certification Points Earned: 595
Sustainability Actions Completed: 32



CLINTON—Bronze Certified
Certification Points Earned: 340
Sustainability Actions Completed: 21



CROMWELL—Bronze Certified
Certification Points Earned: 260
Sustainability Actions Completed: 18



PRESTON—Silver Certified
Certification Points Earned: 505
Sustainability Actions Completed: 30



WESTBROOK—Bronze Certified
Certification Points Earned: 305
Sustainability Actions Completed: 24



WOODBIDGE—Silver Certified
Certification Points Earned: 500
Sustainability Actions Completed: 30



Rooted in Kindness

Since 1825, Liberty Bank has been dedicated to improving the lives of our customers, teammates, and the communities we serve across Connecticut. We're delighted to support **Sustainable CT's 2026 Spring into Summer Celebration** as a Bronze Sponsor.

Together, we share a commitment to fostering inclusive, resilient and vibrant communities where everyone has the opportunity to thrive. By supporting Sustainable CT's mission, we continue our longstanding commitment to strengthening Connecticut and helping create a brighter future for all.



Member FDIC

THE COMMUNITY MATCH FUND AT \$5M

ACROSS CONNECTICUT, residents are showing that meaningful change happens at the local level, whether that be the addition of a pollinator garden, a community composting initiative, a local arts and culture program, tree planting, greenways for biking and walking, and more. These ideas can all become a reality through [Sustainable CT's Community Match Fund \(CMF\)](#), a unique crowdfunding and grant matching program.

This month, the Community Match Fund exceeded \$5 million in direct investment in community-led projects.

"The Community Match Fund was designed to be a welcoming and easily accessible source of funding for anyone with a good idea to improve their towns," said **Lynn Stoddard**, the retired founder of Sustainable CT and the driving force behind the creation of the CMF. "Our goal has always been to empower people who live in and know what is best for their communities and to shed the top-down traditional grant structures."



Since its creation in 2019, the Sustainable CT Community Match Fund has invested in over 400 community-led projects in 88 Connecticut municipalities.

Continued on page 10



The Community Match Fund has a state-wide reach.



switch together.

Group Buying
for Solar and
Batteries



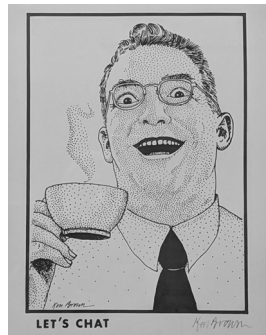
www.switchtogether.com



The Sustainable CT Coffee Hour

Join Sustainable CT for informal discussions **the third Thursday of each month at 10 a.m.**

We share program updates and resources, explore your questions, and strengthen the network of Sustainable CT champions.



THE COMMUNITY MATCH FUND AT \$5M

"Our West Hartford Deaf and Hard of Hearing community mural project would not be where it is today without Sustainable CT," said **Megan Allen**, the project's leader. "Their staff supported us with care, clarity, and encouragement at every step, and we were able to surpass our initial goal by over \$10,000."



Unlike traditional funding programs, the Community Match Fund has no traditional grant application, no deadlines, no lengthy review period, and minimal reporting requirements. The CMF is founded on the principle that residents are uniquely equipped to know best what is needed to improve their communities.

"The Community Match Fund embraces and supports ideas that come from the *community*," said **Jessica LeClair**, executive director of Sustainable CT. "People have great ideas and know what will work in their city, town, or neighborhood, and we're grateful for the opportunity to provide support to help their ideas come to life."

The CMF is open to anyone in a Sustainable CT registered community, so any resident, organization, municipality, or community group is eligible to apply.

"New Haven Climate Movement, a project of the New Haven/Leon Sister City Project, has launched a CMF

Continued on page 12

Reworld[™]
.....

Sustainable
Waste Solutions

Waste better.

Better compliance begins
when you reduce waste
risks by avoiding landfills.

reworldwaste.com

THE COMMUNITY MATCH FUND AT \$5M

campaign every year since 2021," said **Adrian Huq**, cofounder of the New Haven Climate Movement Youth Action Team and current member of Sustainable CT's Board of Directors. "Over the last 5 years, we have benefited from over \$20,000 in matching funds, which is greatly impactful for small, grassroots organizations like ours, and I have recommended taking advantage of the CMF to several other organizations."

To date, Sustainable CT has matched \$2.35 million of the \$2.65 million raised by project leaders from over 27,000 individual local donors.

"This hands-on expression of Sustainable CT's roadmap for municipal certification is the lifeblood of the broader program," said **Michelle Knapik**, president of the Emily Hall Tremaine Foundation, an original and on-going funder of the CMF. "The Tremaine Foundation encourages new donors to join the philanthropic pool. Inspiration is running high, and the pipeline of community-led initiatives continues to grow."

The Community Match Fund functions on a rolling basis. To see our 2025 projects, review our [CMF "Year in Review" flipbook](#). Anyone with an idea for a public, sustainability-related initiative is encouraged to contact us at funding@sustainablect.org.

Sustainable CT's Community Match Fund is generously supported by:



Titan Energy is a Proud Supporter of Sustainable CT!

Helping municipalities across Connecticut lower utility costs, maximize efficiency, and achieve sustainability goals with creative energy solutions.

Power Smarter. Save More. Sustain Better.



electricity | natural gas | solar | lighting | ev charging

TITAN ENERGY

info@titanenergyne.com | 860-436-2768 | www.titanenergyne.com



MEET THE FELLOWS

THE SUSTAINABLE CT FELLOWSHIP PROGRAM places highly qualified students across the state’s Councils of Governments (COGs) to help cities and towns become registered, certified, or recertified with Sustainable CT during the summer.

Fellows assist cities and towns within the various COGs by researching and documenting their sustainability work, supporting municipalities on sustainability initiatives, and assisting on COG projects that align with Sustainable CT goals.

Fellows gain valuable experience working within a professional setting and are directly engaged in supporting cutting-edge sustainability initiatives, local government operations, and regional coordination and operations. Fellows build a deep professional network supporting sustainability initiatives across the state.

We are grateful to the following supporters of the Sustainable CT Fellowship Program:



“The Sustainable CT Fellowship was such a valuable experience for me because it blended hands-on municipal sustainability work with professional development and mentorship.”
—Maya Avilés,
2025 and 2026 Fellow



BRENNY ALCANTARA

Brenny is a rising senior at the University of Connecticut, majoring in Environmental Science and minoring in Political Science. He will be working at the *Capitol Region Council of Governments* in Hartford. Brenny enjoys community work such as organizing cleanups in Waterbury or environmental education at local high schools.



NATALIA ALTIMARI

Natalia recently graduated from Virginia Tech with a Bachelor of Science in Environmental Economics: Management and Policy, along with a minor in Strategic Communications. She is excited to continue advancing environmental policy, and climate advocacy, She will be working for *Northwest Hills Regional Council of Governments*.



MAYA AVILÉS

Maya is a 2026 graduate of Columbia University earning a Bachelor of Arts in Sustainable Development.

She served as the 2025–2026 Columbia Chapter Director of Sprout Up, an environmental volunteer organization dedicated to providing environmental education to public school students. Maya will be working with the *South Central Regional Council of Governments* in North Haven.

PowerOptions Connect

An Equitable Path to Clean Energy Resilience

Less Cost. Less Carbon. Less Complexity.

PowerOptions and PowerOptions Connect help municipalities navigate the energy transition. From buildings to fleets, we provide the programs and advice every community needs to meet its goals, regardless of size or budget.

Simplify your energy future.

poconnect.org

MORE FELLOWS



NATALIE CROWLEY

Natalie is a rising junior at Amherst College majoring in Environmental Studies and Economics, and previously worked with the Amherst College Office of Sustainability and the Amherst Survival Center. This summer, Natalie will be working with the *Southeastern CT Council of Governments* in Norwich.



GRACE DITUNNO

Grace is a rising junior at the University of Connecticut majoring in political science and applied data analysis. She will be working in the *Naugatuck Valley Council of Governments* in Waterbury.



ADAM HAGENS

Adam is a rising senior at Yale University pursuing a B.S. in Environmental Studies with a concentration in Climate & Energy. Adam previously worked with the Urban Resources Initiative in New Haven. This summer, he is excited to be working with the *Metropolitan Council of Governments*.



ANNA HILARY

Anna is a rising senior at the University of Connecticut double majoring in Environmental Science and Economics of Sustainable Development & Management (ESDM). Anna was a Sustainable CT Fellow last summer. This summer, she will be working with the *Capitol Region Council of Governments*.

THE POWER OF HARD WORK IN YOUR COMMUNITY

HARD WORK DRIVES RESULTS.

At Casella, hard work means reliable trash, recycling, and resource management services you can count on. As a trusted local partner, we deliver sustainable solutions that keep your community moving.

We handle the hard work so you can focus on what matters most.



To find services near you scan the QR code, call 860-955-6561, or visit casella.com/getservice-ct



NATHANIEL HILL

Nathaniel is a first-year graduate student at the University of Denver studying Global Environmental

Sustainability with a certificate in Global Business and Corporate Social Responsibility and is a 2025 graduate of the University of Vermont. He will be working with the *Lower CT River Valley Council of Governments* in Essex.



WasteZero
Save Money. Reduce Waste.

Working with municipalities to cut trash in half for 35 years

MEET YOUR SUSTAINABILITY GOALS
1-800-866-3954

wastezero.com



STILL MORE FELLOWS



BRIANNA JACKSON

Brianna is a rising junior at Boston University studying International Relations and Environmental Analysis and Policy. She is excited to work with the *Western Connecticut Council of Governments* in Sandy Hook this summer. Brianna is a passionate environmental advocate and in her spare time you can likely find her going on walks, reading, and spending time outdoors.



CHARLOTTE MINNICK

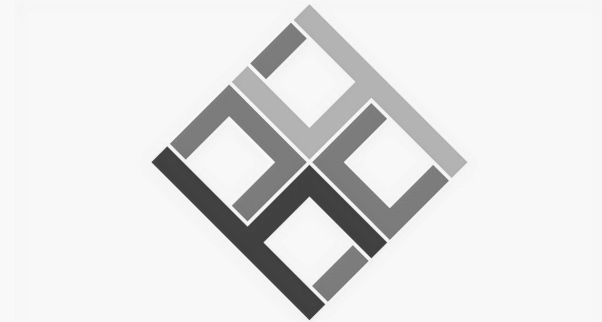
Charlotte is a rising junior at Dickinson College double majoring in Environmental Science and French & Francophone Studies with a minor in Geosciences. This summer, she will be working at the *Northeastern Connecticut Council of Governments* in Dayville. She is also excited to be going abroad this fall to Toulouse, France.



LYAH MUKTAVARAM

Lyah is a 2026 graduate from Wesleyan University, where she double-majored in Economics & Environmental Studies. At Wesleyan, she served as an Office Coordinator and Environmental Fellow for the Sustainability Office and as a Zero Waste Fellow with the Post-Landfill Action Network. Lyah is also planning on attending law school to pursue a career in environmental law. This summer, Lyah will be working with the *Western Connecticut Council of Governments* in Sandy Hook.

The Sustainable CT 2026
Spring into Summer Celebration
is generously sponsored by



CAPITAL
FOR CHANGE

Delivering **FINANCIAL CAPITAL**
and **IMPACTFUL CHANGE**
to Connecticut's communities
that need it most.

(860) 233-5165

capitalforchange.org



EXHIBITORS



EARTH FORWARD GROUP

The Gold Sponsor of our event.

Their name—Earth Forward Group—reflects an acknowledgment of the planet that underpins our existence, and their unwavering belief in the future. Their goal is to provide business and advisory services that promote sustainable growth.



CAPTITAL FOR CHANGE

A Silver Sponsor of our event.

Capital for Change provides community development capital and services that: create and preserve affordable housing; expand housing opportunities for low- and moderate-income residents; invest in job- and wealth-creating small businesses; and support community-centered non-profit organizations with an emphasis on economic sustainability.



CONNECTICUT DEPARTMENT OF AGRICULTURE

Connecticut has always been a great place for agriculture. It's DoAg's job to keep it that way. They're proud to support producers and consumers across the state with a range of programs and services, such as: farm and business assistance and development; aquaculture management; animal services; grants and funding opportunities; licenses and permits; and farmers' market programs.



CONNECTICUT DEPARTMENT OF ENERGY AND ENVIRONMENTAL PROTECTION MUNICIPAL CONCIERGE TEAM

Conserving, improving and protecting the natural resources and the environment, and making cheaper, cleaner and more reliable energy.



CONNECTICUT GREEN BANK

The Green Bank's mission is to confront climate change by increasing and accelerating investment into Connecticut's green economy to create more resilient, healthier, and equitable communities. Their vision is a planet protected by the love of humanity.



CONNECTICUT LEAGUE OF CONSERVATION VOTERS

A non-partisan, statewide, non-profit organization dedicated to protecting Connecticut's environment by making it a priority for our elected leaders.



CONNECTICUT OFFICE OF THE ARTS (DEPARTMENT OF ECONOMIC AND COMMUNITY DEVELOPMENT)

Their goal is to inspire, empower, educate, and transform. They believe the arts are a human right, and they envision a world where the arts, in all forms, are embedded in everyday life.



RECYCLE MORE THAN EVER BEFORE.

When you choose to recycle with All American Waste, you're not just doing your part—you're doing more.

Our state-of-the-art recycling facility is one of the most advanced in the country, giving us the ability to recover materials many others leave behind. Items like pizza boxes, clear plastic cold cups, and black plastics—often assumed to be unrecyclable—can now be sorted, recovered, and given a second life.

Some see waste. We see possibilities.



ALL AMERICAN WASTE
ALLAMERICANWASTE.COM

MORE EXHIBITORS



CTRIDES

A program of the Connecticut Department of Transportation, connect people with flexible and reliable travel options—such as public transit, carpooling, vanpooling, biking, walking, and teleworking—to make everyday trips easier, affordable, and sustainable.



CYLINDER COLLECTIVE

A nonprofit Producer Responsibility Organization designed to implement and operate recycling programs for pressurized cylinders.



PEOPLE'S ACTION FOR CLEAN ENERGY (PACE)

Working with towns and individuals to improve energy efficiency, conservation, and clean renewable energy. Their mission is to transition Connecticut to clean energy through grassroots education and advocacy.



SUSTAINABLE CT FELLOWS

To help cities and towns become registered, certified, or recertified with Sustainable CT during the summer.



THE NATURE CONSERVANCY

Tackling the dual threats of accelerated climate change and unprecedented biodiversity loss. Science determines where we focus and equity guides how we achieve lasting results.

ACTIONS & IMPACT
Monday, June 1, 2026 volume 6, number 6

Eight Connecticut Communities Recognized for Sustainable CT Certification

BOZRAH, CT, June 1, 2026 – Sustainable CT is proud to announce the certification achievements of eight communities for their exceptional commitment to sustainability.

The Cities and Towns of **Bridgeport, Preston, and Woodbridge** have achieved Silver certification, highlighting their proactive approaches to sustainability and reflecting advanced initiatives in sustainable practices, community engagement, and environmental stewardship.

The Towns of **Bloomfield, Branford, Clinton, Cromwell, and Westbrook** have earned Bronze certification, demonstrating significant achievements across a broad range of sustainability actions, including public health, equity, energy efficiency, environmental stewardship, and community vitality.

All these towns will be recognized at Sustainable CT's 2026 Spring into Summer Celebration on June 11 at the Hill-Stead Museum, Farmington.

elements

The Next Sustainable CT Coffee Hour: Thursday, June 18, at 10 a.m. *The How and Why of Climate Resilience*

Join our June climate resilience coffee hour with **Deb Abibou** and **Sarah Schechter** from the Long Island Sound Partnership. They will discuss the Sustainable and Resilient Communities initiative that encourages communities to plan for and respond to environmental challenges in ways that prioritize well-being for all, including objectives to inform decision makers, drive community resilience planning, and implement resilience actions.

You can join Sustainable CT for virtual, informal discussions most third THURSDAYS of each month. We share program updates and resources, explore your questions, and strengthen the network of Sustainable CT champions. These sessions are free and open to all.

June's IMPACT: the Community Match Fund Crosses the \$5M Mark *We celebrate the milestone with a group of special guests*

Since its creation in 2019, the Sustainable CT Community Match Fund has invested in over \$5 million in more than 400 community-led projects in 88 Connecticut municipalities. We hear from our founder, **Lynn Stoddard**, about the origins of the CMF, and from project leaders who have done remarkable things with the support of this remarkable program. Remarkable.

This month's episode of *The IMPACT* will be available on June 15 on the Sustainable CT website, and wherever you get your podcasts.

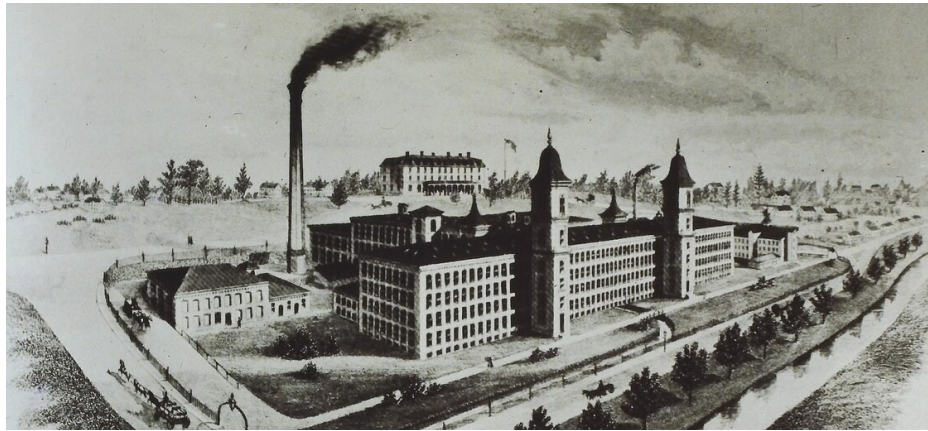
The Community Match Fund *Wildlife Viewing Shelter at Midden Lookout Park*

The Jonah Center for Earth and Art, the City of Middletown, local landscapers, an engineering firm, the Middletown Garden Club, a landscape designer, two recycling centers, Wesleyan University students and staff and the Trail Blazers volunteer group - they're all pitching in to build a wildlife viewing shelter in Middletown's Midden Lookout Park. It will be designed to give people a break from the sun, provide a place to sit and listen to nature, birdwatch and gather for artful and educational events. C'mon, put the "lookout" in Midden Lookout Park!

“Do yourself a favor and subscribe.”

If you're not yet a subscriber to *Actions & Impact*, the Sustainable CT newsletter, you could be missing out on some very important information to you, to your organization, and to your town. Do yourself a favor and subscribe today at sustainablect.org. You'll be glad you did.

WHAT'S PAST IS PROLOGUE



CONNECTICUT has a deeply-rooted history of environmental leadership, being one of the first states to establish a state-level environmental protection agency in 1971. Over decades, grassroots advocates and policymakers successfully fought to clean up industrial waterways, preserve pristine state forests, and spearhead aggressive regional greenhouse gas reduction initiatives. This legacy of conservation laid the foundation for modern localized sustainability action.

Today, the future of our state's ecosystem looks remarkably bright, driven by the widespread adoption of the Sustainable CT roadmap. Our impactful, town-by-town, city-by-city certification program empowers local communities with funding, resources, and structured paths to achieve their sustainability goals. With robust support from residents, businesses, and municipal leaders alike, we are transforming grassroots enthusiasm into measurable statewide resilience, ensuring a healthier, more sustainable tomorrow for generations to come.

Thank you for taking this journey with us, and for believing in the power of community. As ever, we can't do this without you.

—The Sustainable CT Team

PROFESSIONAL TRAINING FOR CONNECTICUT MUNICIPALITIES

BUILD SMARTER. SAVE MORE. LEAD SUSTAINABLY.

Equip your facilities teams, public works staff, green teams, and local contractors with building science knowledge to reduce operating costs, improve building performance, and advance your community's sustainability goals.

FACILITIES TEAMS

PUBLIC WORKS

GREEN TEAMS

ENERGY MANAGERS

SUSTAINABILITY COMMITTEES

LOCAL CONTRACTORS

WHY TRAIN YOUR STAFF WITH EFG

Cut Operating Costs

Staff trained in building science identify energy waste and drive savings across municipal buildings.

Expert-Led Instruction

All courses are led by seasoned industry professionals with decades of real-world field experience.

Meet Sustainability Goals

Arm green teams and sustainability committees with credentialed, practical knowledge.

Support Local Contractors

Elevate your contractor workforce to better serve your community's housing needs.

COURSE OFFERINGS

BSP

Building Science Principles

Master heat transfer, moisture management, and house-as-a-system fundamentals for facilities managers and building operators.

▶ earthforwardgroup.com/learn/lp

HHP

Healthy Housing Principles

Understand indoor air quality and occupant health, critical for housing staff, public works, and community programs.

▶ earthforwardgroup.com/learn/lp

GPRO

GPRO: Fundamentals of Building Green

Foundational green construction knowledge. *Coming soon* — join our list or email us.

▶ info@earthforwardgroup.com

GPRO

GPRO: Operations & Maintenance

Sustainable building operations for facilities and public works. *Coming soon* — join our list or email us.

▶ info@earthforwardgroup.com



REGISTER & LEARN MORE

Email or call us for group rates, municipal packages, and to schedule your free intro conversation.

earthforwardgroup.com

(203) 687-8278 | info@earthforwardgroup.com

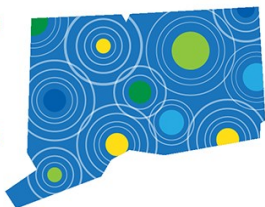
Use code
SUSTAINABLECT
for 10% off

“HOPE is very lovely
in its place, but if I
do not also act, I
shall wake some morning to find
myself middle aged and
sorrowing because I have not
tried to make the world I touch a
little better.”



—Theodate Pope Riddle

Sustainable CT
Local Actions. Statewide Impact.®



sustainablect.org · 860-253-2969 · info@sustainablect.org
PO Box 107 · Bozrah, CT 06334



©2026, Sustainable CT, Inc.