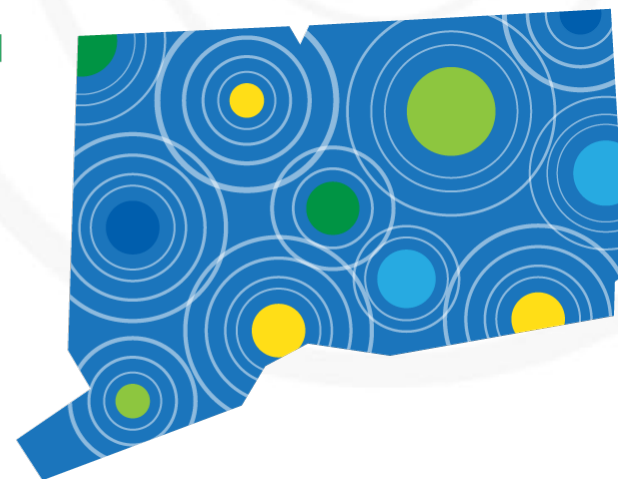


Sustainable CT

Local Actions. Statewide Impact.



Opportunities to Implement Transportation Actions
July 22, 2019

What is Sustainable CT?

Sustainable CT is a voluntary certification program to recognize thriving and resilient Connecticut municipalities.

An independently funded, grassroots, municipal effort, Sustainable CT provides a wide-ranging menu of best practices. Communities choose Sustainable CT actions, implement them, and earn points toward certification.



Sustainable CT Has Momentum

Certification Program Statistics

83

TOTAL REGISTERED



22

CERTIFIED



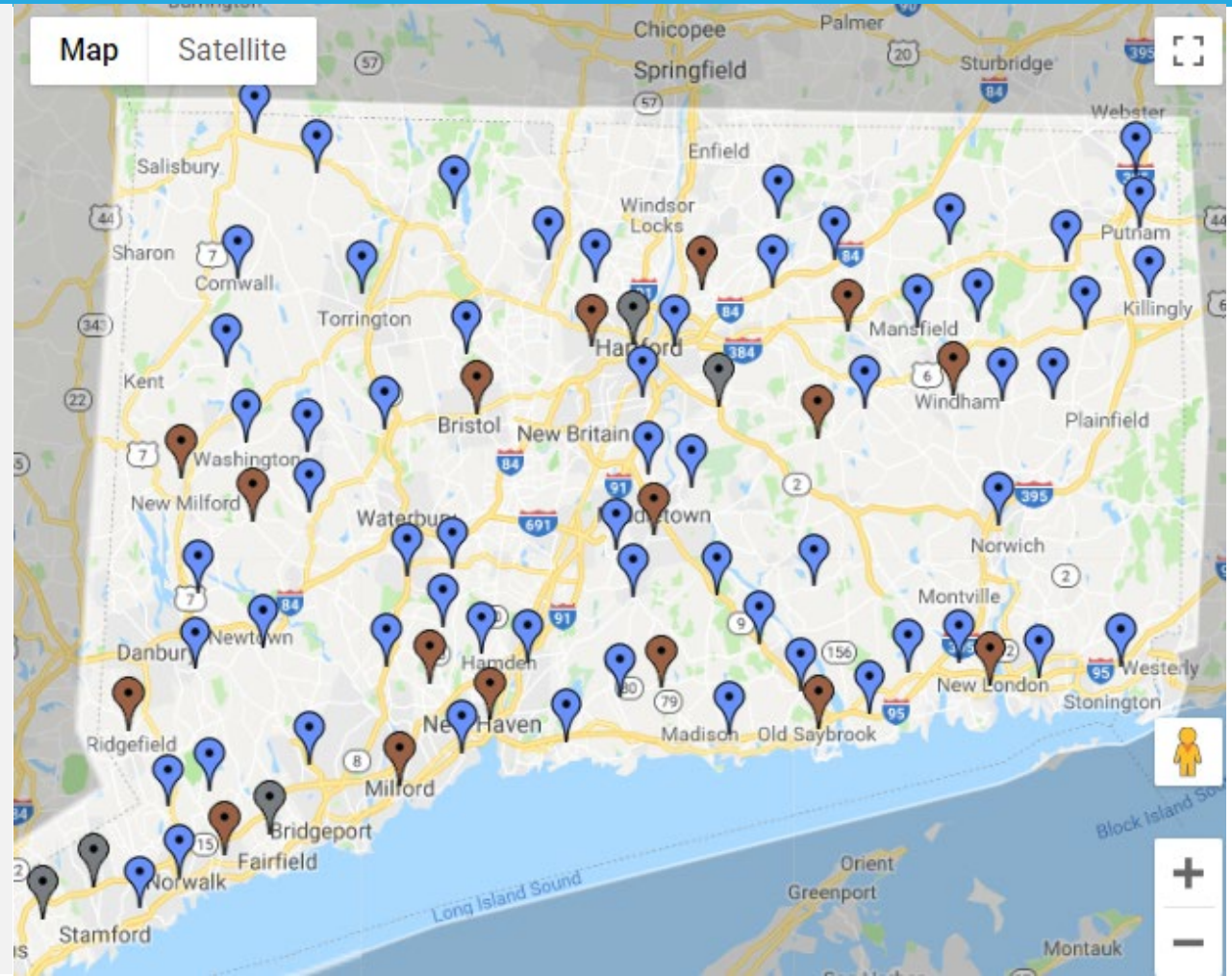
17

BRONZE CERTIFIED



5

SILVER CERTIFIED



2019 Certification Requirements



Bronze Certification

- Successfully complete actions totaling **200 or more points**
- Complete **1 Equity Toolkit** in action 9.1 Optimize for Equity
- Complete at least 1 action in each of **categories 1-9**



Silver Certification

- Successfully complete actions totaling **400 or more points**
- Complete **3 Equity Toolkits** in action 9.1 Optimize for Equity
- Complete at least 1 action in each of **categories 1-9**

Transportation Actions

5. Clean and Diverse Transportation Systems and Choices



5.1 Implement Complete Streets

5 Points



UNPLANNED ▼

5.2 Promote Effective Parking Management

10 Points



UNPLANNED ▼

5.3 Encourage Smart Commuting

10 Points



UNPLANNED ▼

5.4 Support Zero Emission Vehicle Deployment

5 Points



UNPLANNED ▼

5.5 Promote Public Transit and Other Mobility Strategies

5 Points



UNPLANNED ▼

Transit-Oriented Development Promotes Inclusive Placemaking

THE RIGHT MIX FOR A NEIGHBORHOOD INCLUDES:

MIX OF ACTIVITIES

HOUSING, JOBS, SCHOOLS AND RETAIL COMPLEMENTARY USES

so that your neighborhood is vibrant from morning till evening and supports good transit over long hours.

EVERYDAY NECESSITIES ACCESS TO LOCAL SERVICES

so that you can easily walk to at least an elementary school, health services, and a fresh food market to help meet your daily needs.

GREEN AND OPEN SPACES ACCESS TO PARKS AND PLAYGROUNDS

so that you can go out play, interact, and maintain your physical and mental health close by.



MIX OF PEOPLE

HOUSING OPPORTUNITIES FOR ALL INCOME LEVELS AFFORDABLE HOUSING

so that your neighborhood is diverse and offers housing options for all.

LONG-TERM AS WELL AS NEW RESIDENTS HOUSING PRESERVATION

so that your neighborhood can grow without uprooting the people who already live there.

OLD LOCAL BUSINESSES AS WELL AS NEW ONES BUSINESSES AND SERVICES PRESERVATION

so that old businesses continue serving and employing local people while new ones enrich local activity.

*Infographic courtesy
of the Institute for
Transportation and
Development Policy*

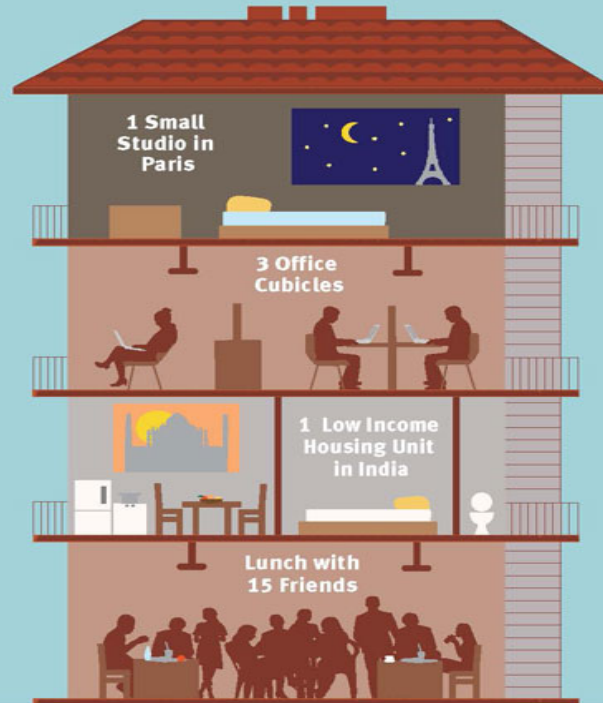
Effective Parking Management Supports Potential Other Uses

Sizing Up Parking Space

One Parking space is 18m^2 (220ft^2).

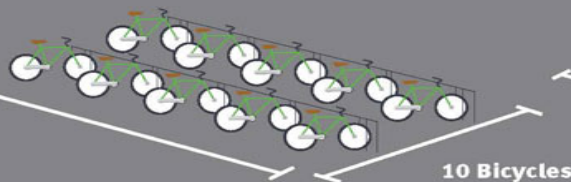


That's equivalent to...

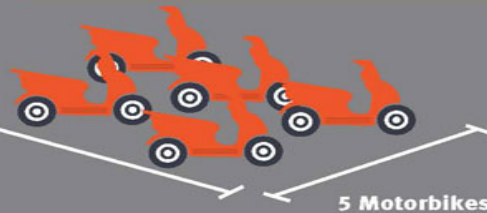


ITDP | Institute for Transportation & Development Policy

Infographic courtesy of the Institute for Transportation and Development Policy



10 Bicycles



5 Motorbikes



2 Rickshaws

Walkability Promotes Health, Economic Benefit and Greenhouse Gas Reductions



INFRASTRUCTURE

ENSURE A PHYSICAL SPACE AND DESIGN THAT PROMOTES WALKING

- 1 Sidewalks are sufficiently wide, in good condition, clean, unobstructed, and protected
- 2 Crosswalks are accessible for all pedestrians, safe to cross, and sufficiently wide
- 3 Signals give priority to pedestrians to cross first and limit wait time, while ensuring enough time for all to cross

ACTIVITY

BRING PEOPLE AND ACTIVITIES CLOSE ENOUGH TO WALK IN SAFE AND LIVELY ENVIRONMENTS

- 4 A mix of activities and services activate the street from morning to night, making it safer and more interesting to walk
- 5 Street vendors and sidewalk amenities such as seating, shade, lighting and garbage bins attract more users and animate the sidewalks
- 6 On-street parking that is well-managed and well-priced can calm traffic while creating a buffer between moving vehicles and the pedestrian realm

PRIORITY

GIVE PREFERENCE TO WALKING, CYCLING, AND TRANSIT OVER PRIVATE CARS

- 7 Transit, such as bike share, bus, BRT, and rail, are reachable by foot
- 8 Small street widths are easier to cross
- 9 Slower speeds for traffic, by both design and enforced speed limits, make safer and more enjoyable walking environments

Opportunities to Implement Transportation Actions

- 5.1. Implement Complete Streets
 - 5.1.2. Complete streets training
 - 5.1.6. Implementation, repair and maintenance projects
- 5.3. Encourage Smart Commuting
- 5.5. Promote Public Transit and Other Mobility Strategies
 - 5.5.1. Educate residents about alternative routes and transportation methods
 - 5.5.3. Conduct a bicycle and/or pedestrian audit

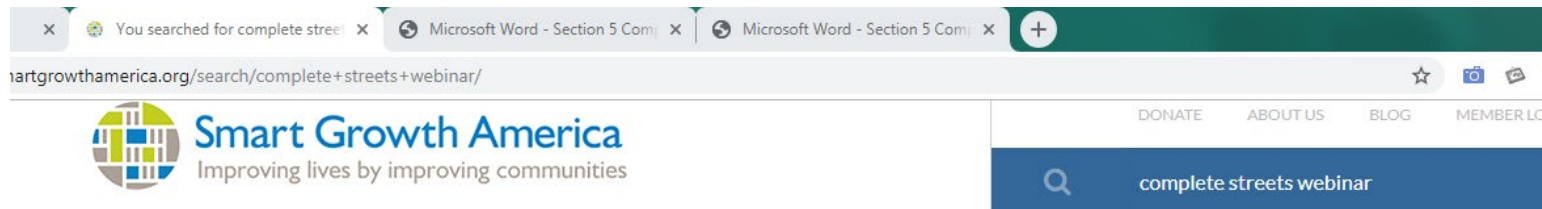
5.1. Implement Complete Streets



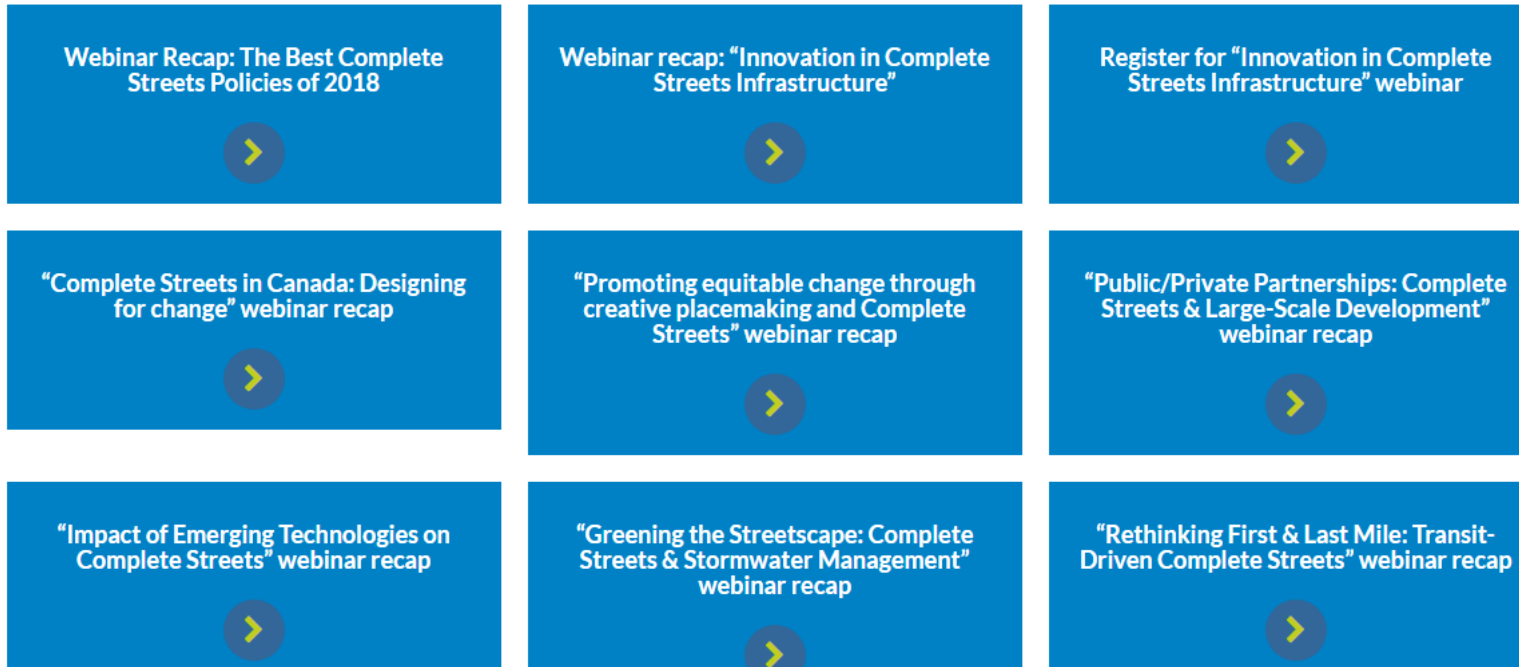
“Suburban and rural communities often want to preserve their small town character, and are apprehensive that the addition of sidewalks could diminish that appeal. At the same time, communities want to improve active transportation and safety for all users. Design compromises such as a pedestrian lane or advisory shoulder can serve as a visual separation for pedestrians and bicyclists without completely changing the street.”

-Smart Growth America

5.1.2. Complete Streets Training



Search Results for "complete streets webinar"



- Have municipal elected officials and/or staff members and/or commissioners participate in a complete streets training
- Archived webinars are on option (e.g., Smart Growth America's National Complete Streets Coalition, etc.)

5.1.6. Implementation, repair and maintenance projects

4. CDOT #32-147 - Main Street Streetscape Extension and Sidewalk Extension – Town of Coventry initiated two projects utilizing CT Small Town Enhancement Aid Program (STEAP) that extended the streetscape and sidewalk to the south from the limits of the CDOT 32-130 project and sidewalk improvements to the north from the SRTS Project to Hemlock Point Road.

NORTHERLY EXTENSION:



Early Construction 2016

Town of
Coventry,
Sidewalk
extension



End Construction 2017

- Any project that expands safe, connected, active transportation networks across neighborhoods, considering all roadway users—e.g., motor vehicles, pedestrians, bicyclists, transit users
- Examples:
 - Sidewalk widening
 - Street furniture
 - Crosswalks
 - Treebelt enhancements
 - Speed bumps
 - Bike signage
 - Roundabouts
 - Transportation wayfinding

5.3. Encourage Smart Commuting



- Free Support and Technical Assistance from CTrides; contact Caitlin O'Donnell <caitlin.odonnell@ctrides.com>
- Recognition in new Transportation Leaders Program (formerly Partners Program)
- Complete items from checklist (to be revised in 2020 for total alignment with Transportation Leaders Program)
- Examples:
 - Make CTrides/alternative commuting information available
 - Offer preferential parking for car/vanpoolers
 - Offer secure bicycle parking and other bike-friendly amenities
 - Institute flexible hour work programs to reduce commuting trips
 - Implement a new or formalize and existing telework program



Town of Greenwich,
Bicycle Racks at
Town Hall

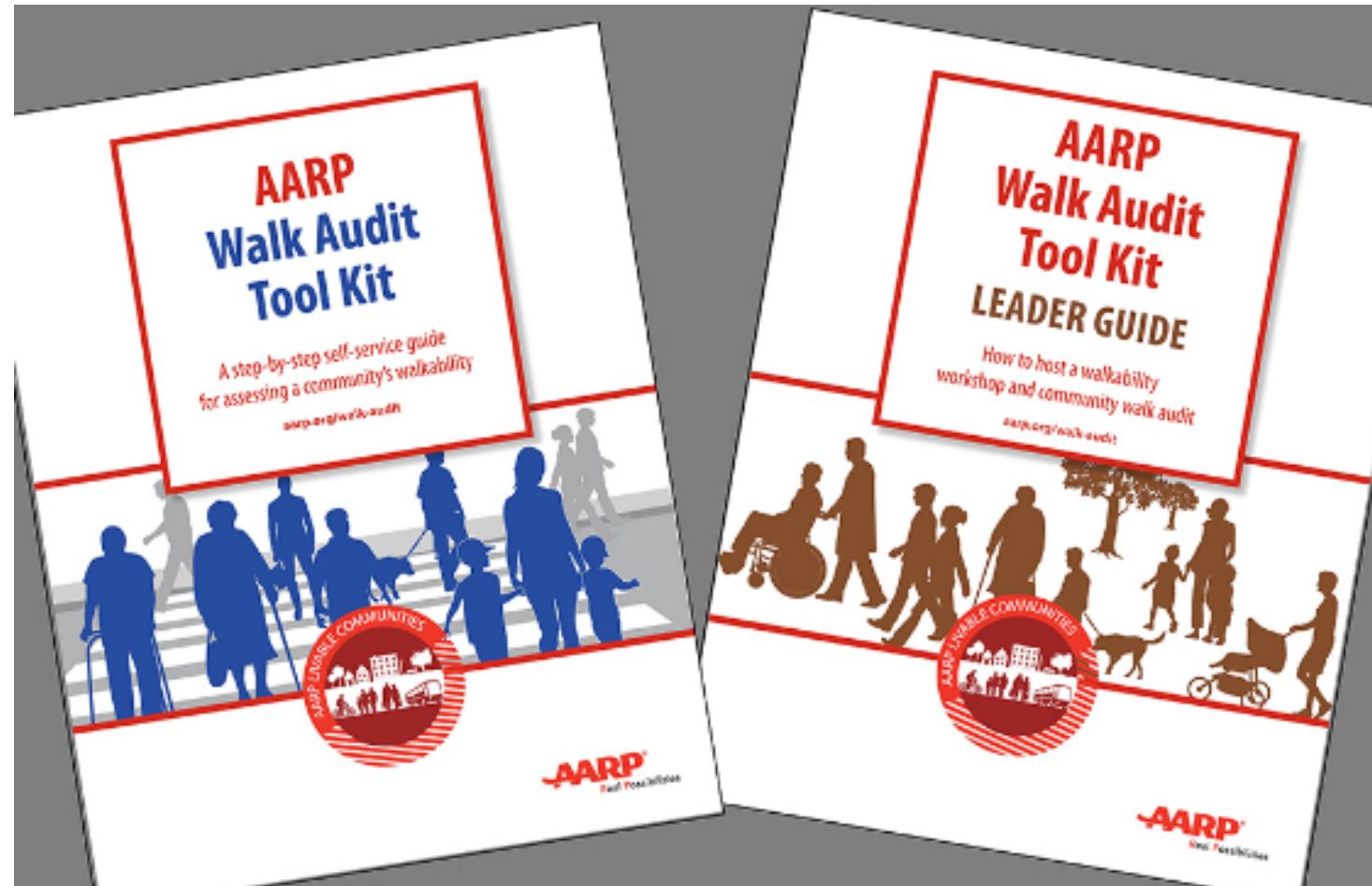
5.5.1. Educate residents re alternative transportation



- Educate residents via existing regional mobility managers, websites, and social media apps, about alternative routes and transportation methods.
- Other ideas
 - Guide of safe places in town to bicycle ride (parking lots not in use on the weekends, etc.)
 - Creating and promoting a volunteer driver network
 - Transportation network companies—promotion and education on using the technology
 - Connecting with CTrides to facilitate carpools

5.5.3. Conduct a Bicycle or Pedestrian Audit

- Assess the walkability of sidewalks and streets in your community
- Can include examining intersections, sidewalks, driver behavior and more
- Share results as basis for creating safe streets improvements, like signage, sidewalks, crosswalks, different light signalizations, etc.
- Scalable: One intersection to several neighborhood roadways



Find Out More

www.sustainablect.org

info@sustainablect.org

860.465.0258



@sustainablect